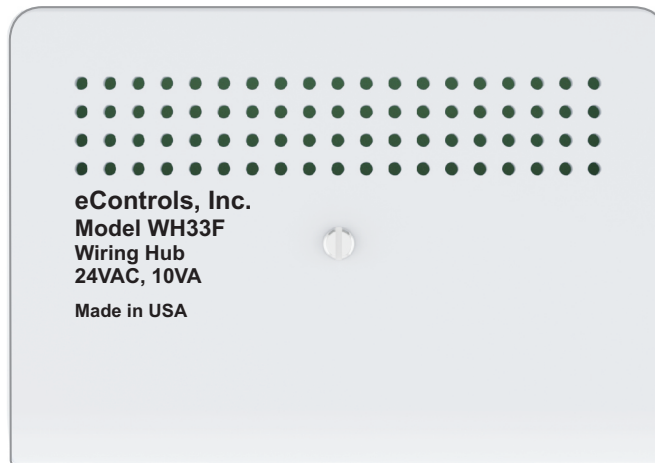


The WH33F Wiring Hub is installed at the equipment and wired to the TC42E or TC42EWF communicating touch thermostat using a 4-wire thermostat cable. The wiring hub and thermostat control heating, compressor cooling and econo cooling using a whole house fan (WHF) and outdoor air.

The Wiring Hub can use either wired or wireless temperature sensors making it economical in RNC installations and easy to install in replacement installations.



### Features

- Controls gas/electric, heat pump or dual fuel heat pump with 3 stages of heating and 2 stages of cooling.
- Installed at the equipment.
- Wires to thermostat using existing thermostat cable.
- Controls whole house fan motors with single or two-speed PSC and ECM motors.
- Controls whole house fans with variable speed ECM motors with PWM input for speed ramping and quiet operation.
- Thermostat uses built in timer or temperature to control WHF.
- Temperature control improves energy savings by only operating the WHF when needed.
- Prevents compressor cooling when WHF cooling is selected.

### Specifications

#### Compatible HVAC Equipment

Gas/electric, 2H/2C  
Heat pump, 2H/2C/1Aux.

#### Compatible Thermostats

Model TC42E or TC42EWF

#### Compatible Whole House Fans

PSC fans with 1 or 2 speeds.  
ECM fans with 1 or 2 speeds.  
ECM fans with variable speed with PWM input.

#### Optional Outdoor Temp. Sensor

An optional outdoor temperature sensor can be used to inhibit whole house fan operation. Required for dual fuel heat pump equipment.

#### Optional Bedroom Area Temp. Sensor

Optionally, one or two temperature sensors can be used in the sleeping area to control heating, cooling and whole house fan operation at night.

#### Wired or Wireless Sensors

The wiring hub uses low cost wired temperature sensors for RNC or wireless temperature sensors to monitor the sleeping area temperature. Two sensors can be used and their temperatures averaged.

#### eLink Plugin Radio

The eLink radio is required when using wireless temperature sensors in the sleeping area.

#### Equipment Terminals

R, C, W/B, O, Y, W2/E, Y2 and G

#### Thermostat Terminals

GND, +5V, SA, and SB.

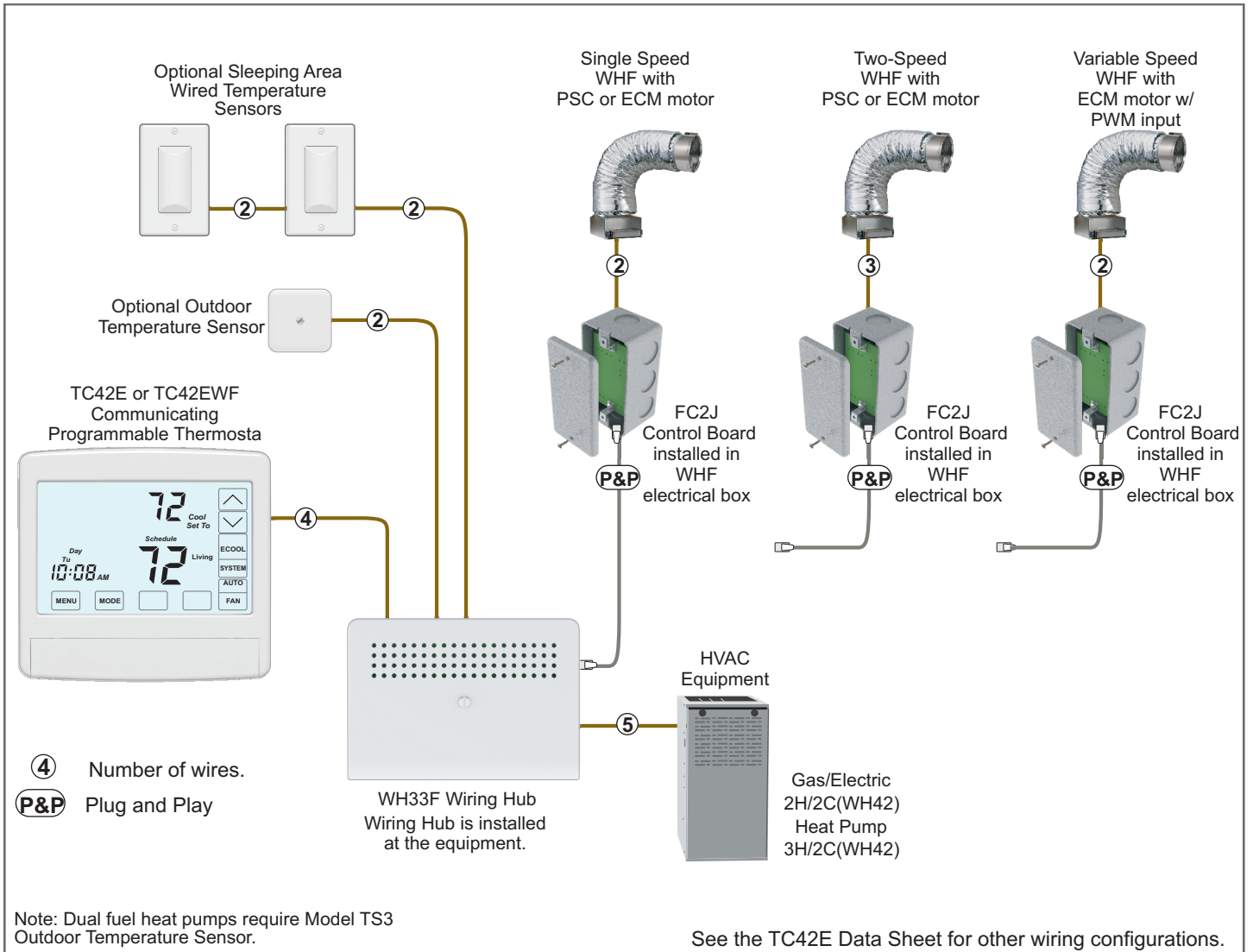
#### Power

Uses 24VAC power from the R and C equipment terminals.

#### Mechanical

5.51w x 3.95h x 1.27d inches. Screws and anchors included for installation.

# TC42E or TC42EWF with WH33F with Wired Sensors



**Whole House Fan Control Thermostats**

Model TC42E  
Model TC42EWF  
With WiFi

**Wiring Hub**

Model WH33F  
For multi-stage G/E or HP

**Temperature Sensors**

Model TS510W  
For single sleeping area sensor installations

Model TS520W  
For dual sleeping area sensor installations

Model TS3  
Outdoor temperature sensor

Model TS5WL  
Wireless temperature sensor. One or two sensors can be used.

Model ELR1  
Plug In Receiving Module. Required when using wireless sensors.

**WHF Control Board**

Model FC2J  
Plug&Play  
Controls 1 or 2-Speed PSC or PWM control of ECM

## 5-Year Warranty

All products have a 5-year warranty, limited to the repair or replacement of the product due to defective material or workmanship.

**eControls**

26072 Merit Circle #110, Laguna Hills, CA 92653  
949-916-0945, www.eControlsUSA.com